



CRESCAT CAPITAL®
THE VALUE OF GLOBAL MACRO INVESTING

May 2023

IMPORTANT DISCLOSURES

Conflicts of Interest. Crescat's private funds, separately managed accounts, principals, and employees are direct and/or indirect investors in many of the companies discussed by Crescat on its videos. In addition, Dr. Quinton Hennigh, Crescat's Geologic and Technical Director, serves on the Board of Directors of Eskay Mining Corporation and New Found Gold Corporation, and is co-chairman of Novo Resources Corporation. Therefore, Crescat's clients, principals and employees may stand to realize significant gains or losses if the price of the companies' securities move. After the publication or posting of any video, Crescat, its principals and employees will continue transacting in the securities discussed, and may be long, short or neutral at any time thereafter regardless of their initial position or recommendation.

Forward Looking Statements. Crescat's videos may include comments that could be deemed "forward looking statements." Forward looking statements are statements that are not historical facts and are generally, but not always, identified by the words "expects", "plans", "anticipates", "believes", "intends", "estimates", "projects", "potential," "targets," and similar expressions, or that events or conditions "will", "would", "may", "could" or "should" occur. Although Crescat believes the expectations expressed in such forward-looking statements are based on reasonable assumptions, such statements are not guarantees of future performance and actual results may differ materially from those in the forward-looking statements. Factors that could cause the actual results to differ materially from those in forward looking statements include market prices, exploration successes, and continued availability of capital and financing, and general economic, market or business conditions. You are cautioned that any such statements are not guarantees of future performance and actual results or developments may differ materially from those projected in the forward-looking statements. Forward looking statements are based on the beliefs, estimates and opinions of Crescat on the date the statements are made.

Crescat does not generally update or review previous forward-looking statements, whether because of new information, future developments or otherwise.

Performance. Performance data represents past performance, and past performance does not guarantee future results. Performance data is subject to revision following each monthly reconciliation and/or annual audit. Individual performance may be lower or higher than the performance data presented. Crescat is not required by law to follow any standard methodology when calculating and representing performance data. The performance of Crescat's private funds may not be directly comparable to the performance of other private or registered funds. Investors may obtain the most current performance data and private offering memorandum for Crescat's private funds by emailing a request to info@crescat.net. Returns are presented net of management fees and performance fees. The currency used to express performance is U.S. dollars. Performance includes reinvestment of dividends and other earnings.

Terms of Use. By viewing Crescat's videos, you acknowledge Crescat is not utilizing these videos to provide investment or other advice. Nothing Crescat posts on these videos should be construed as personalized investment advice or a recommendation that you buy, sell, or hold any security or other investment or that you pursue any investment style or strategy. Case studies may be included for informational purposes only and are provided as a general overview of Crescat's investment process, and not as indicative of any investment experience. There is no guarantee that the case studies are completely representative of Crescat's strategies or of the entirety of its investments, and Crescat reserves the right to use or modify some or all the methodologies mentioned therein.

Ownership. All content posted on Crescat's videos including graphics, logos, articles, and other materials, is the property of Crescat or others and is protected by copyright and other laws. All trademarks and logos are the property of their respective owners, who may or may not be affiliated with Crescat. Nothing contained on Crescat's website or social media networks should be construed as granting, by implication, estoppel, or otherwise, any license or right to use any content or trademark displayed on any site without the written permission of Crescat or such other third party that may own the content or trademark displayed on any site.

No Warranty. Crescat compiles its research in good faith and while it uses reasonable efforts to include accurate and up-to-date information, Crescat's videos are provided on an "as is" basis with no warranties of any kind. Crescat does not warrant the information on its videos is accurate, reliable, up to date or correct. In no event shall Crescat be responsible or liable for the correctness of any such information or content, or for any damage or lost opportunity resulting from use of its videos. Crescat may share, comment on, etc., third-party content on its videos for informational purposes only. Crescat is not responsible for the content of such third-parties and Crescat does not endorse the products, services, or investment recommendations described or offered by third-parties.

For Crescat's full disclosures, including those related to its exempt fund offerings, please visit: <https://www.crescat.net/investor-resources/disclosures/>





CFDs on Gold (US\$ / OZ) · 1M · TVC

O 1991.10 H 2081.82 L 1951.87 C 1977.90 -11.72 (-0.59%)

Vol 0



GOLDPRICE
EST. 2002

CFDs on Silver (US\$ / OZ) · 1M · TVC

O 25.034 H 26.129 L 23.333 C 23.876 -1.159 (-4.63%)

Vol 0





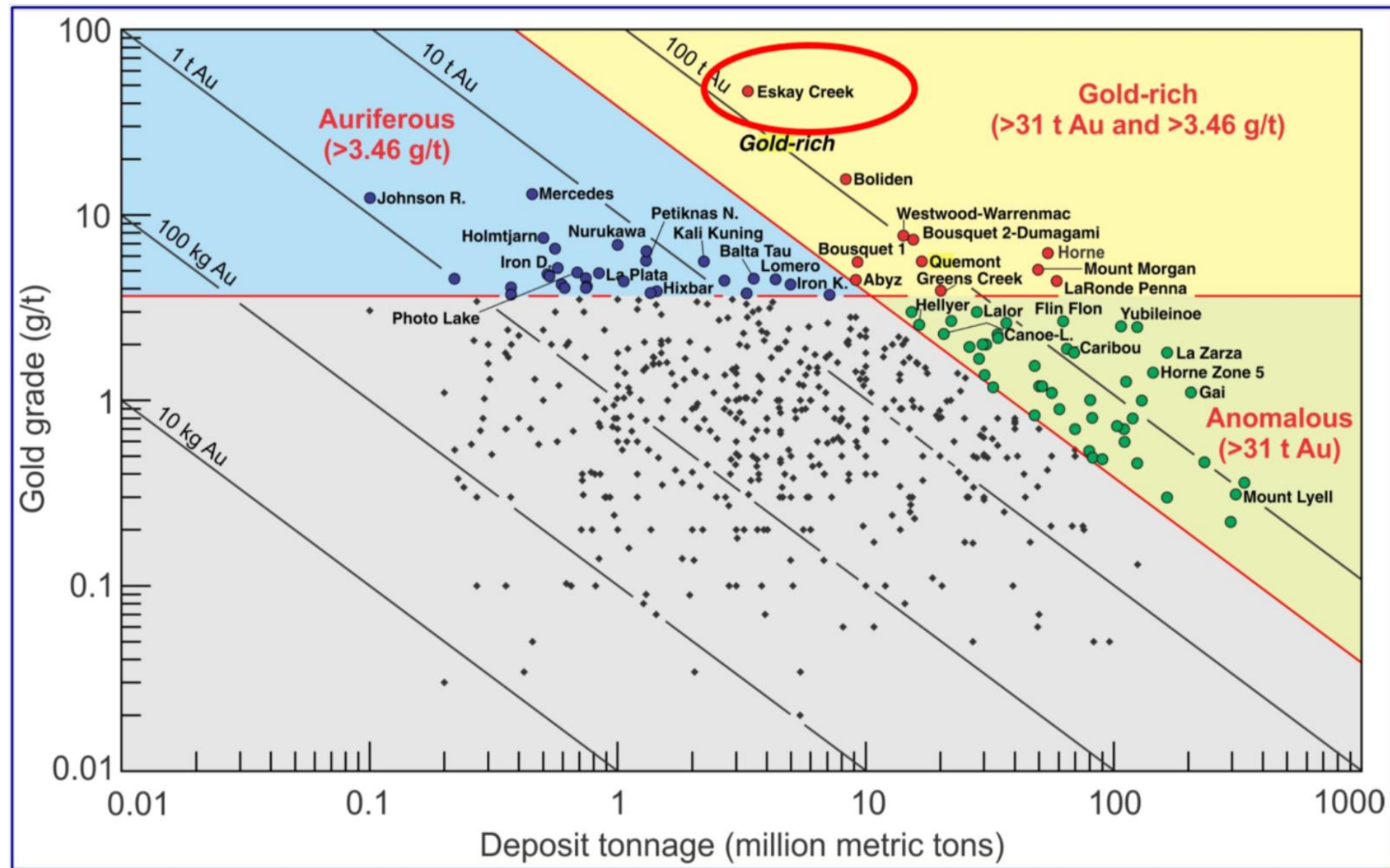


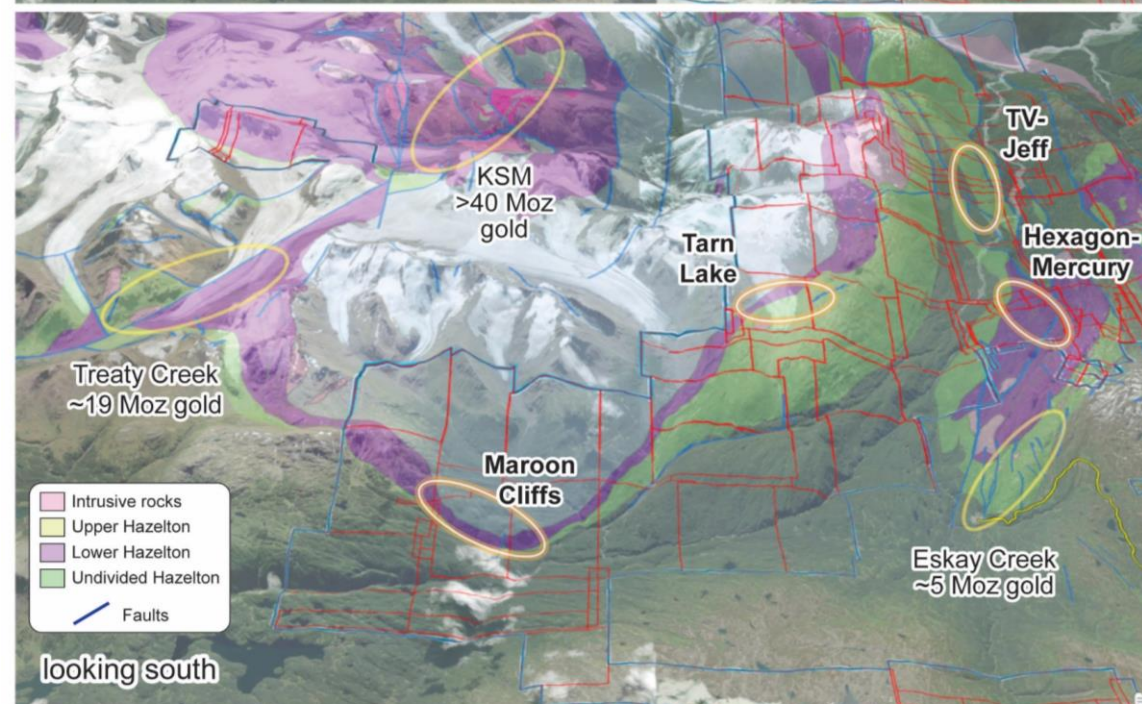
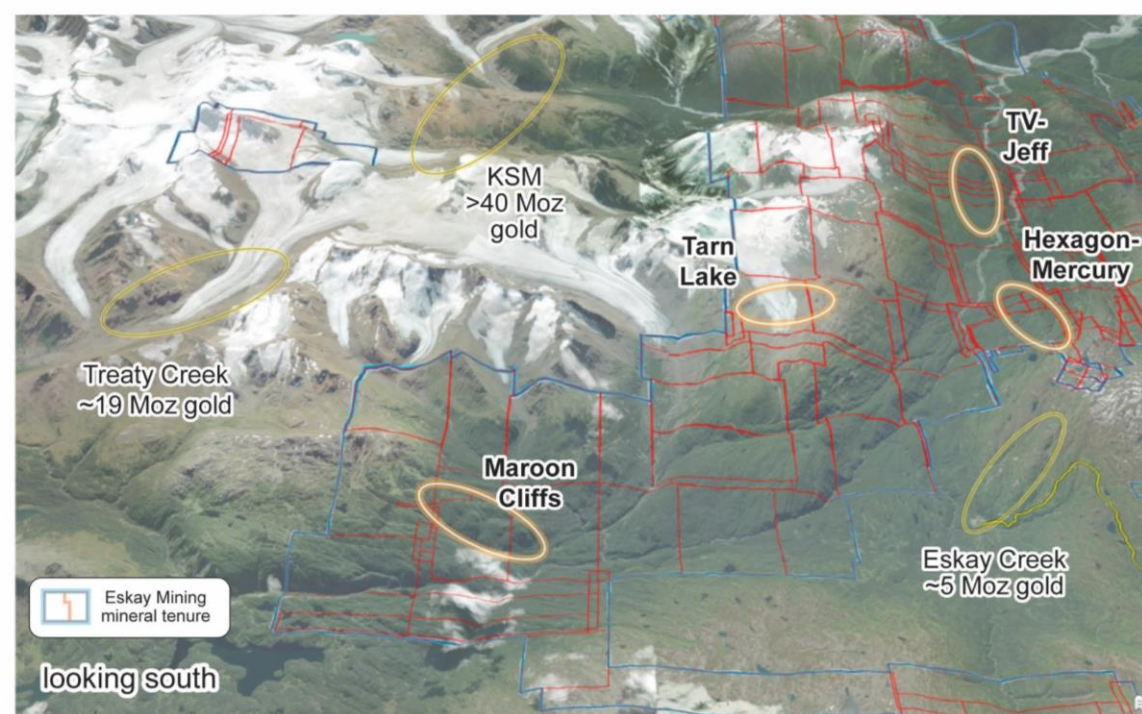
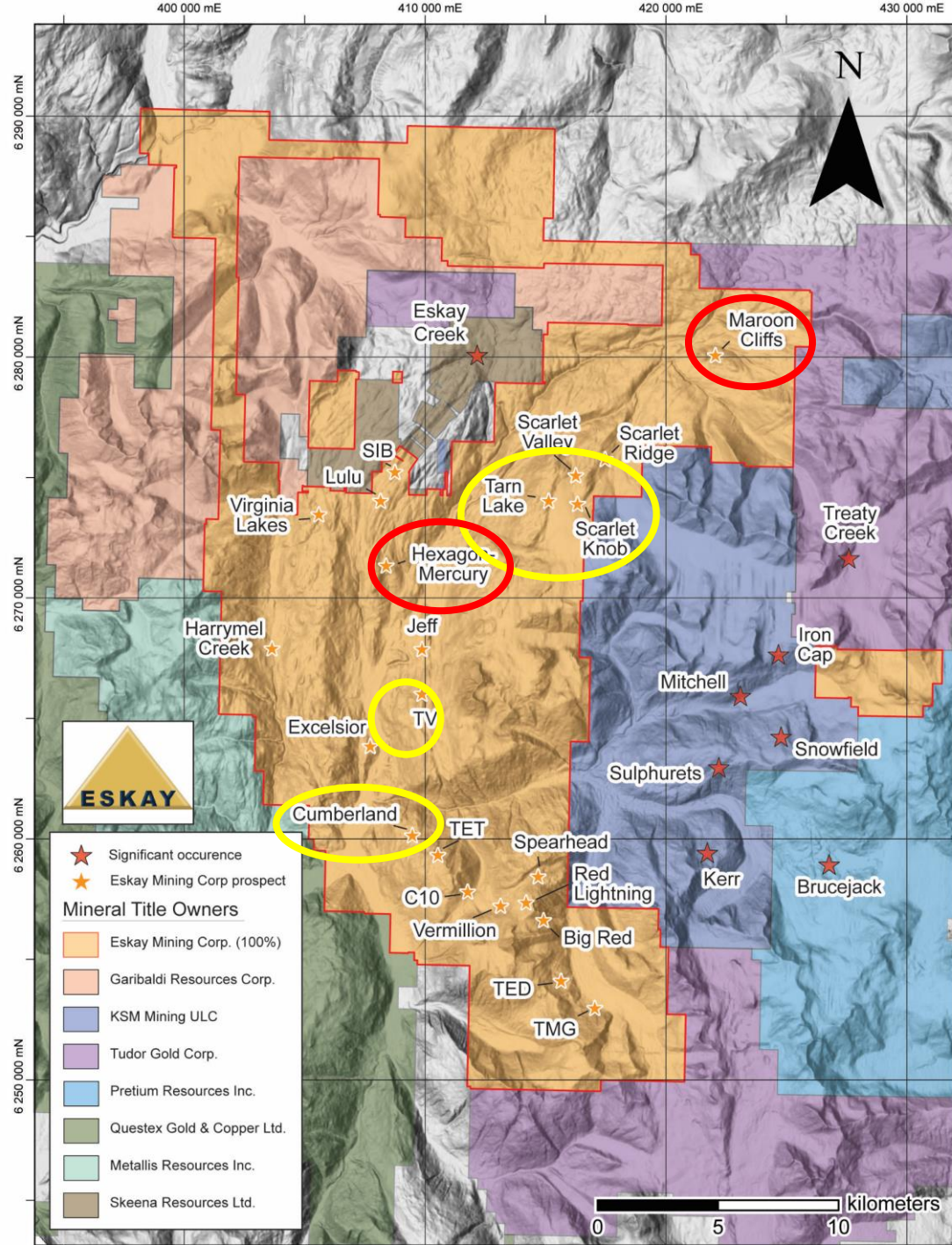
GET
FIRED
UP

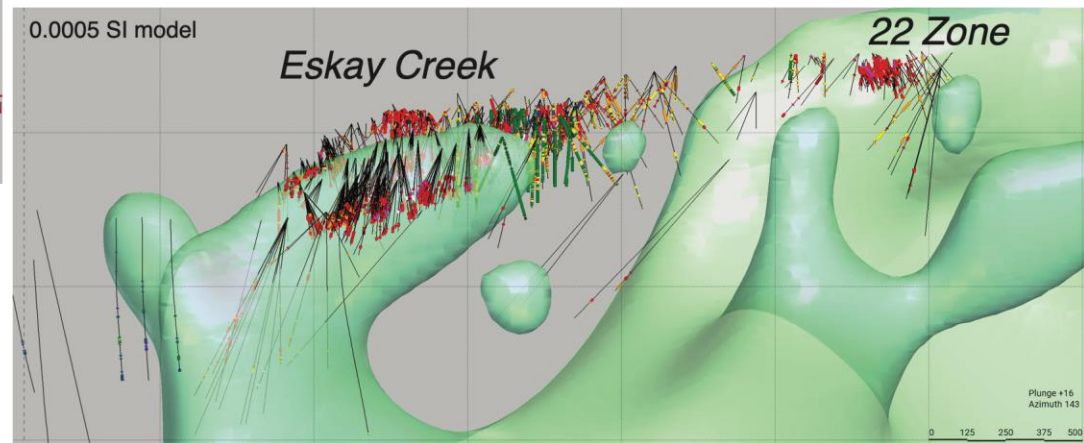
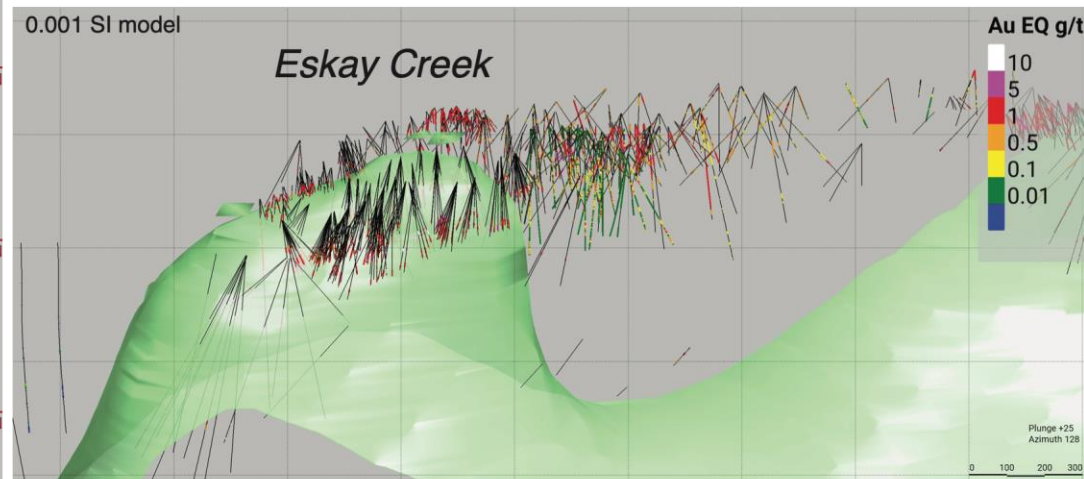
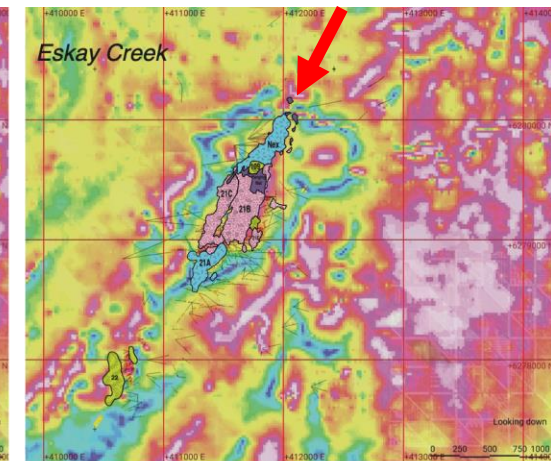
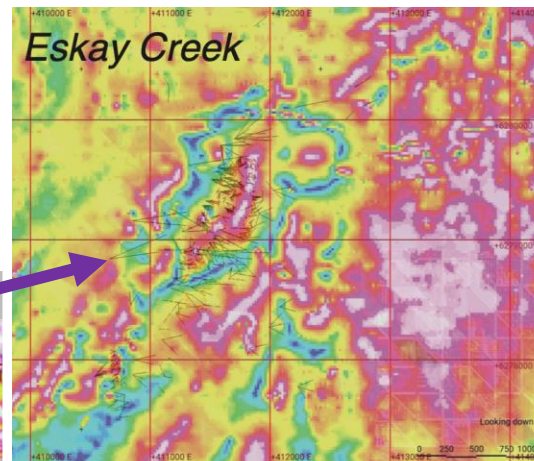
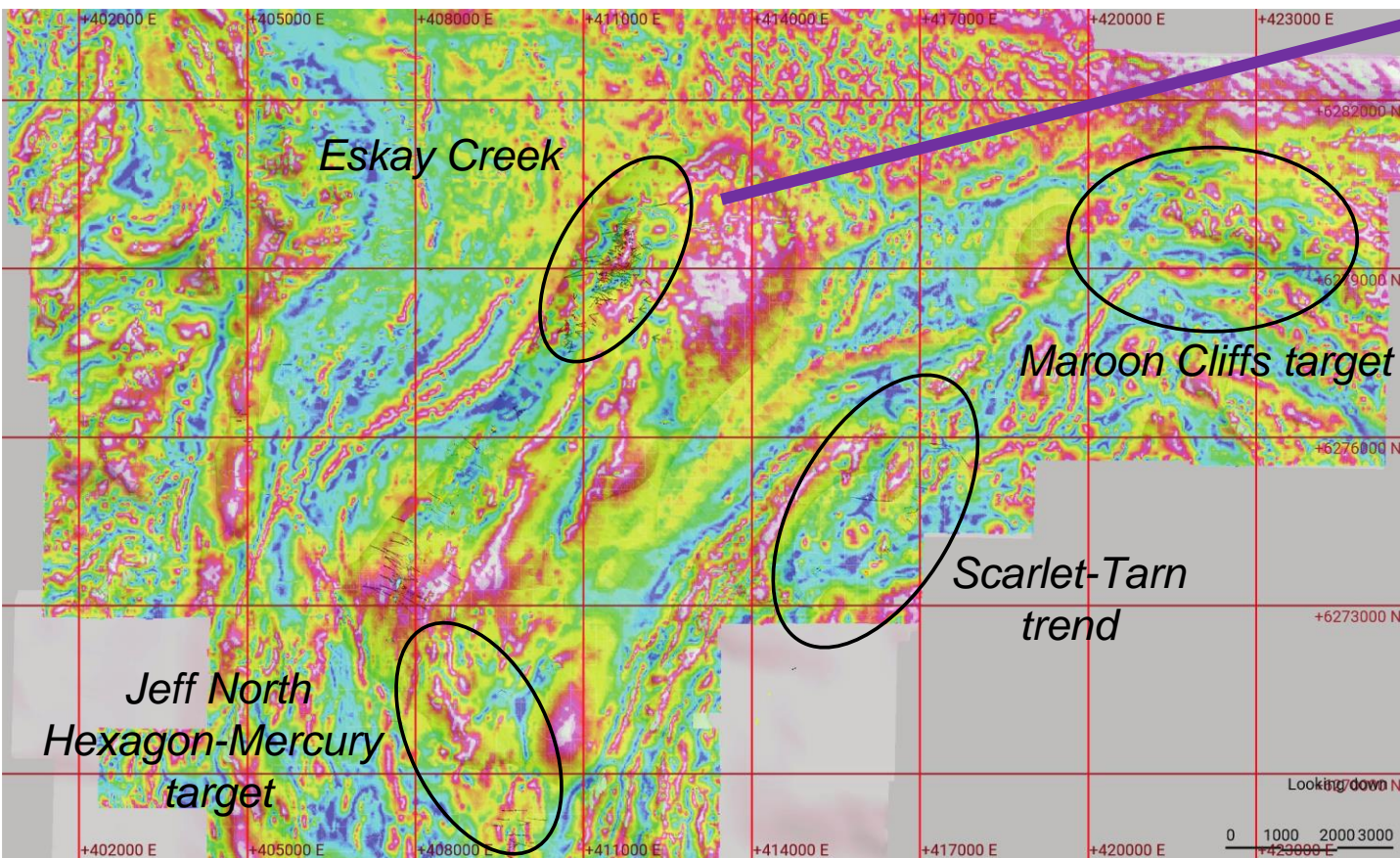


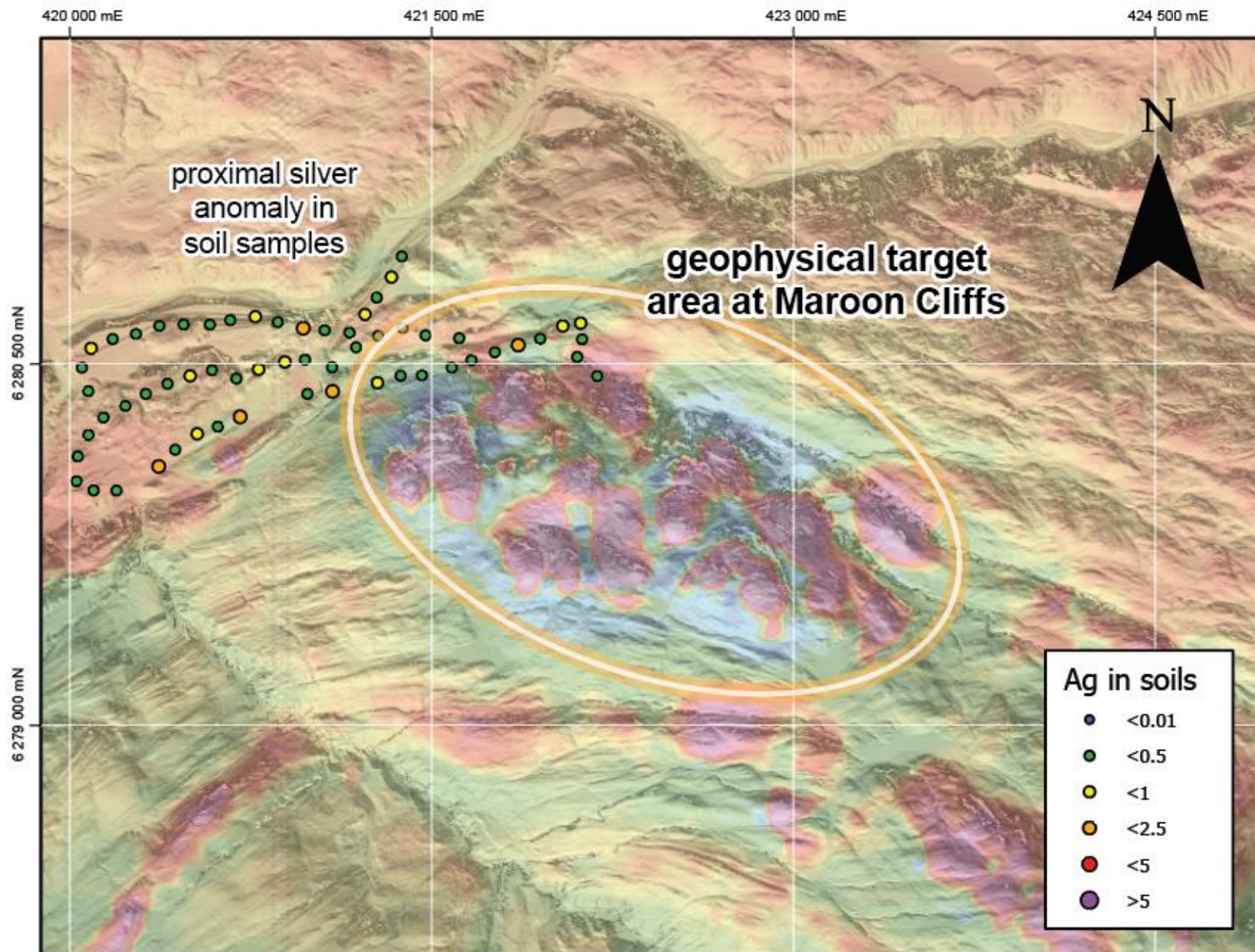
Mining Corp

ESK-TSX-VENTURE
USA-OTC-ESKYF
Frankfurt-KN7









**Geophysical (Mag 1VD)
anomalies with silver in soils
at the Maroon Cliffs target area**

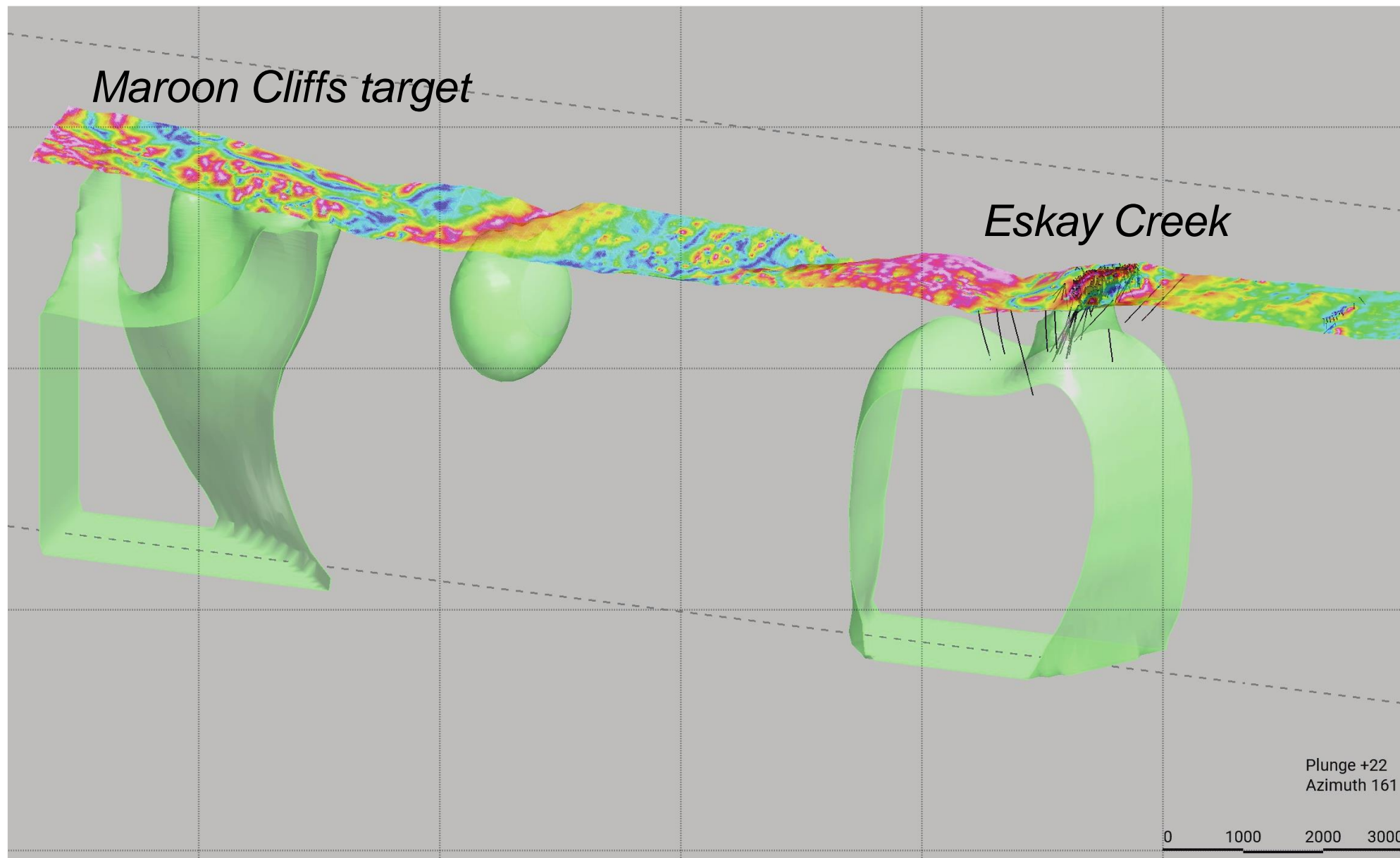
0 0.25 0.5 1
Kilometers

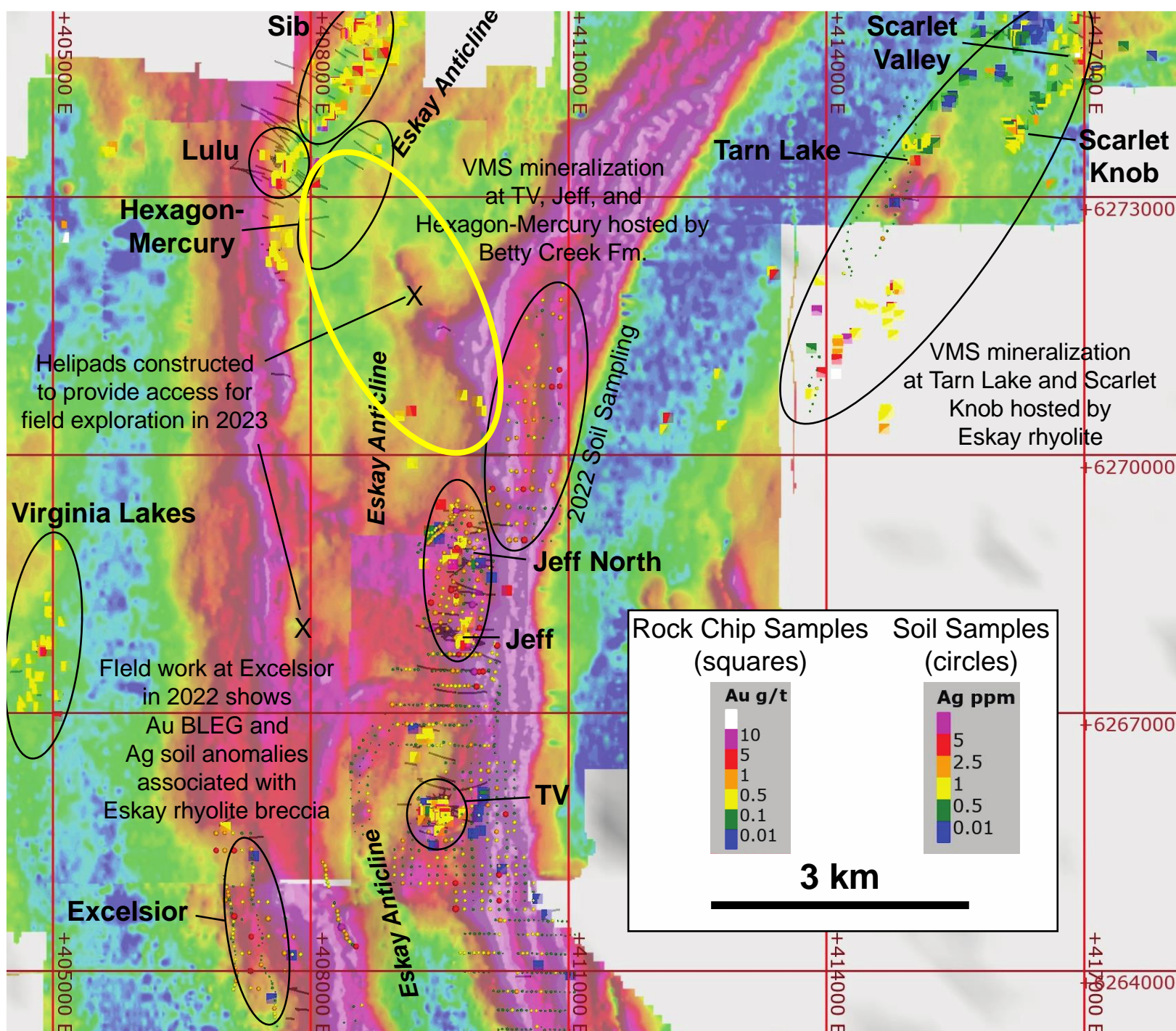
Maroon Cliffs target

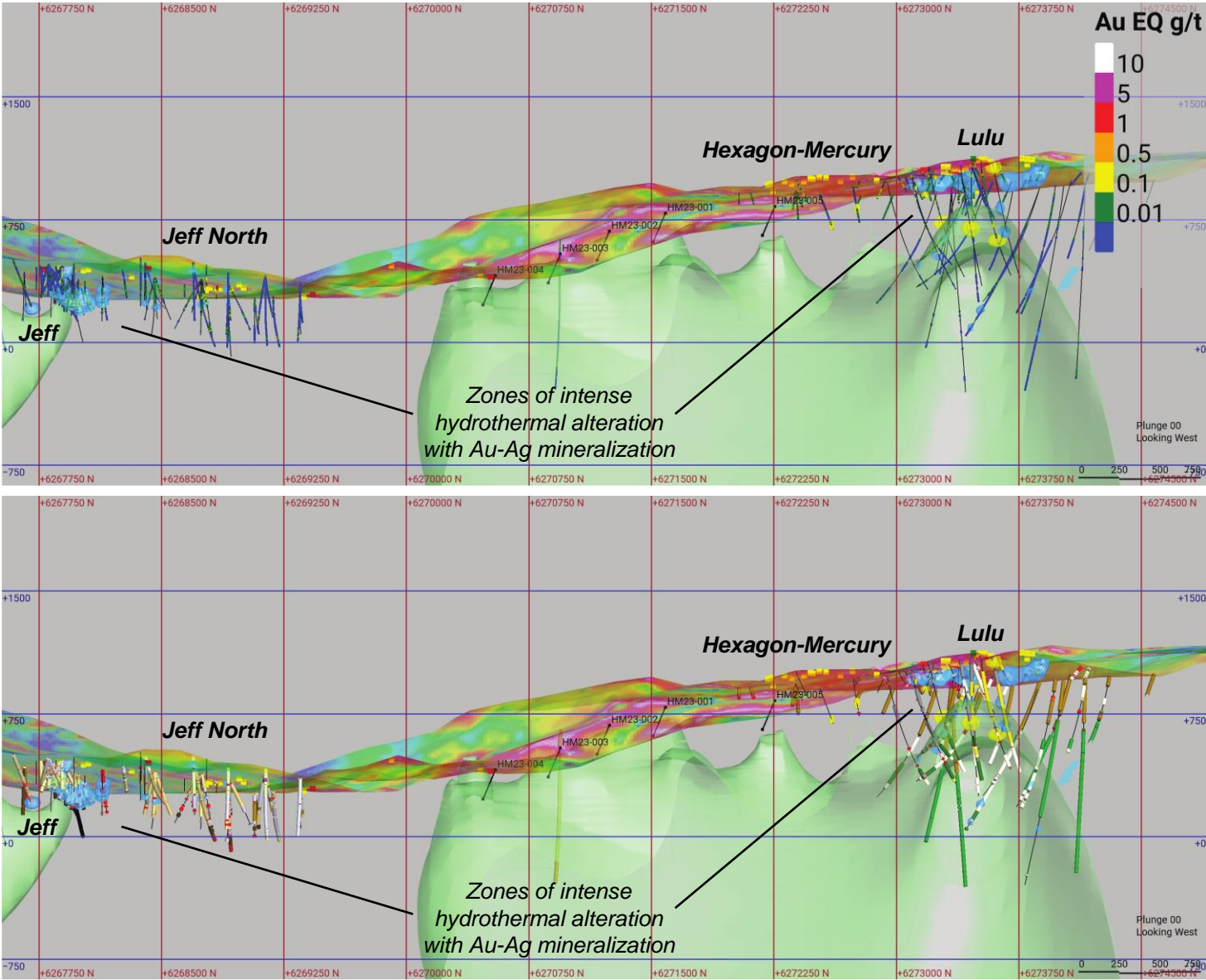
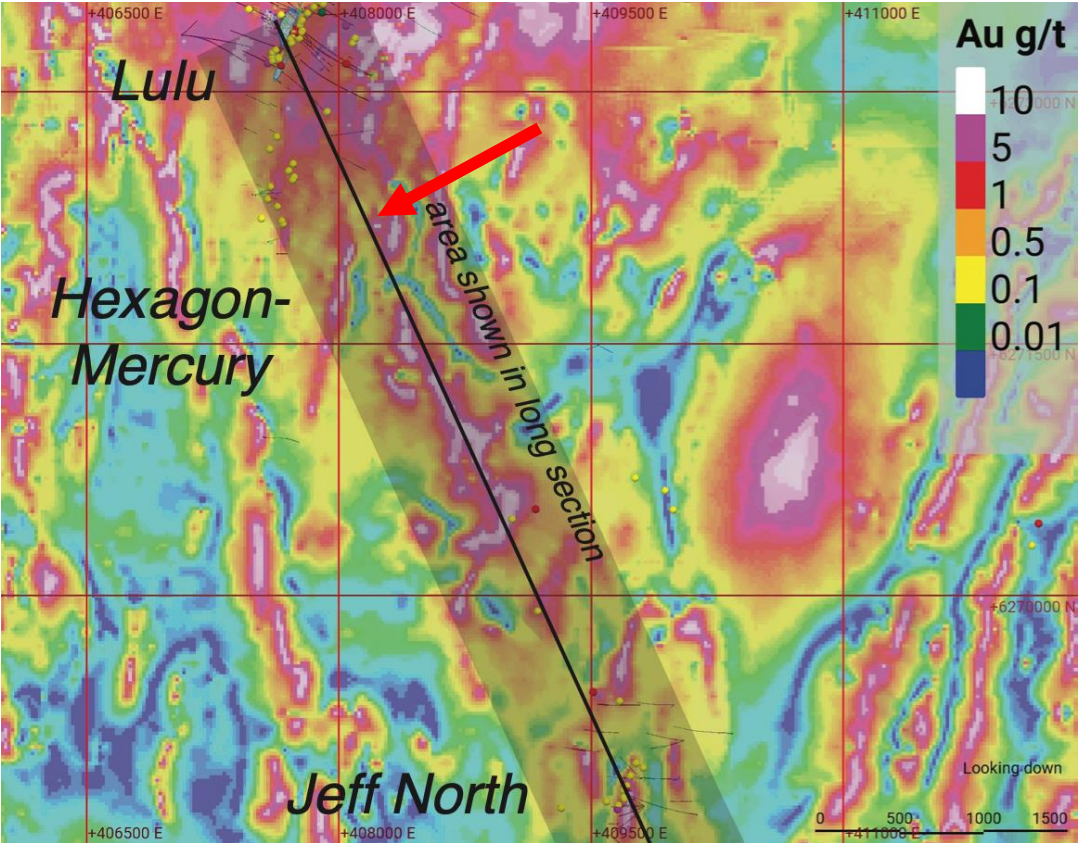
Eskay Creek

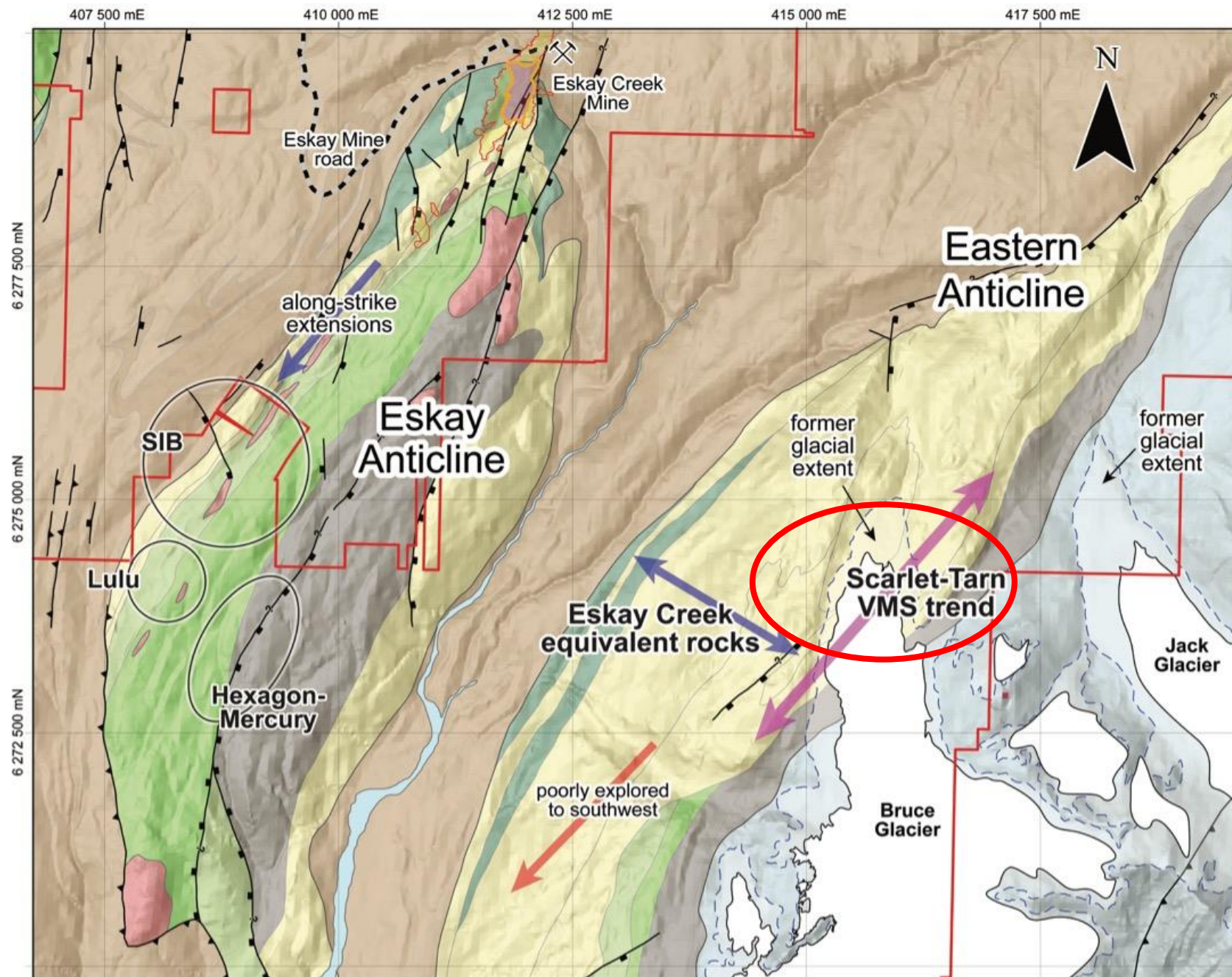
Plunge +22
Azimuth 161

0 1000 2000 3000









Legend

- Eskay Mining mineral tenure
- Eskay Creek Mine
- Eskay Creek deposit mineralized zones
- Eskay Creek deposit 21b zone
- Contact
- Normal fault
- Reverse fault

Bowser Lake Group

- sedimentary units

Upper Hazelton Group

Iskut Fm.

- Willow Ridge basalt units
- Mount Madge sedimentary units
- Bruce Glacier & Eskay rhyolite units
- Spatsizi sedimentary units

Lower Hazelton Group

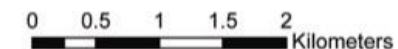
- Betty Creek units
- Jack sedimentary units

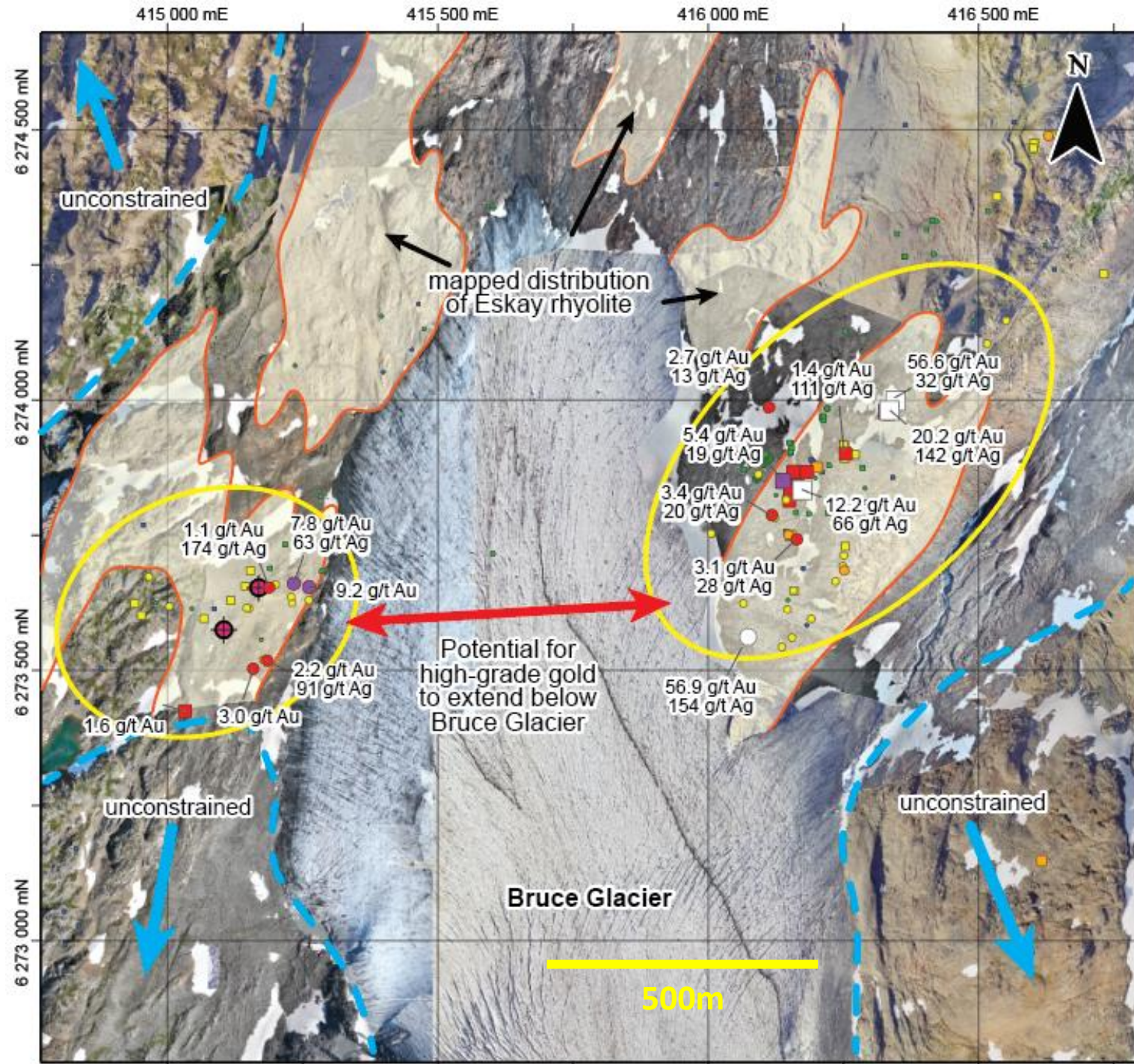
Intrusive rocks

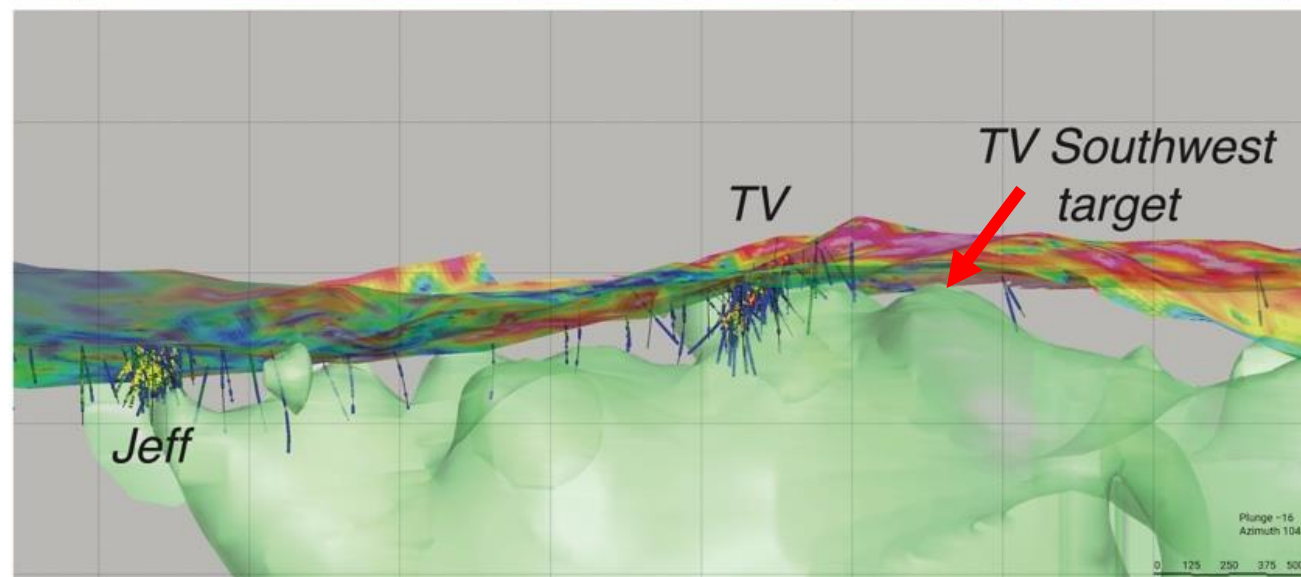
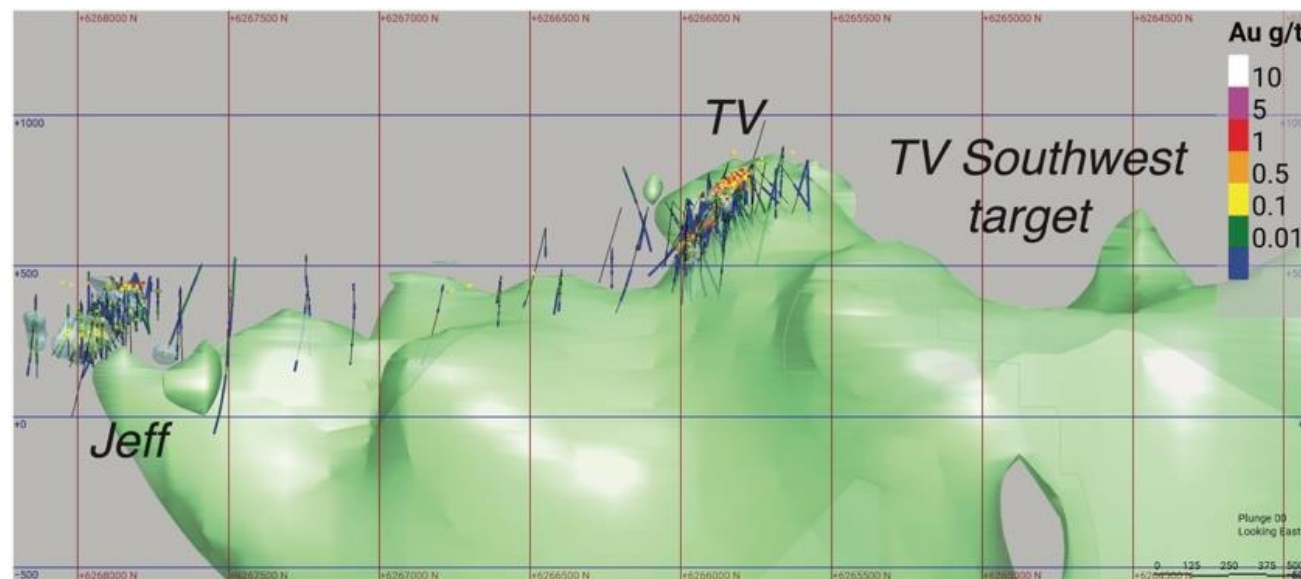
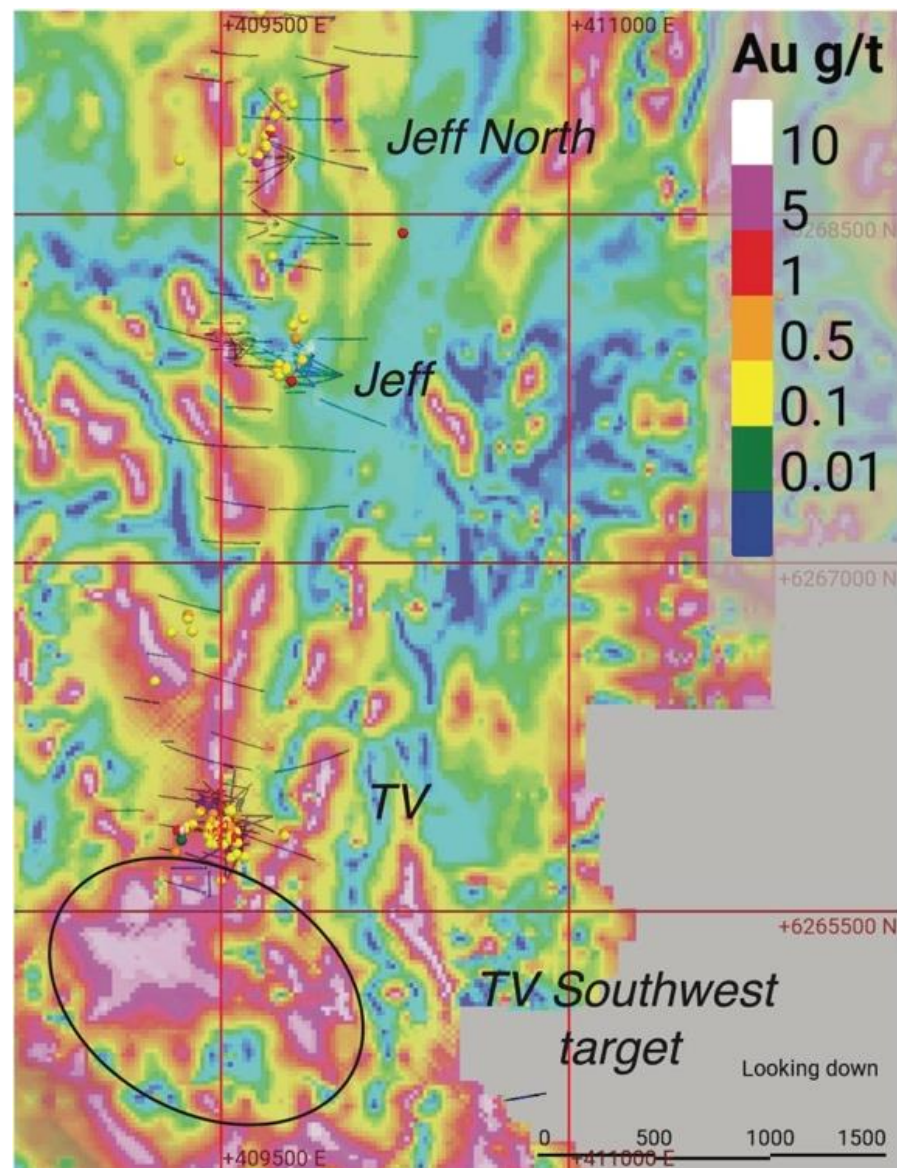
- Texas Creek suite

Stuhini Group

- unsubdivided sedimentary and volcanic rocks



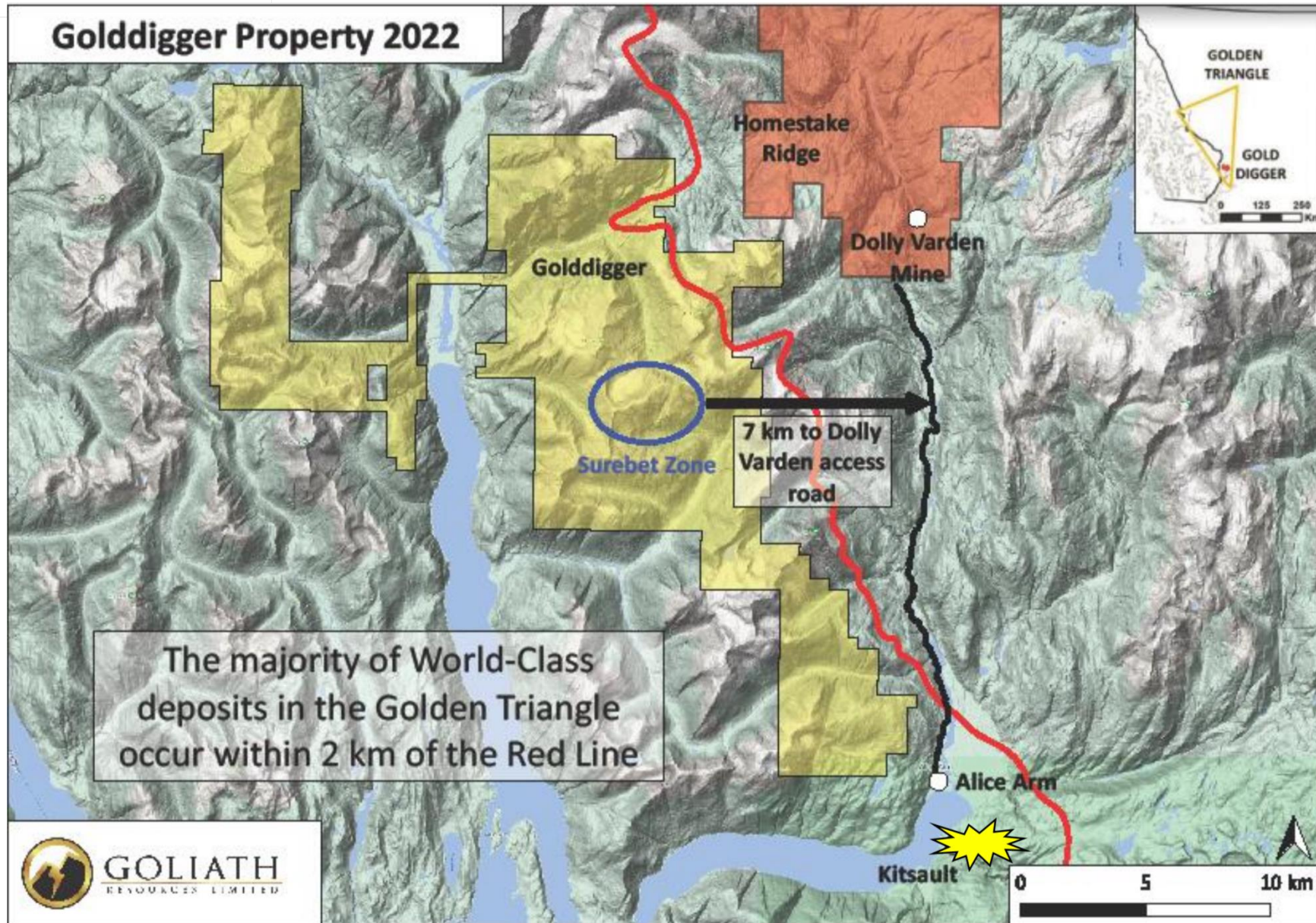






GOLIATH
RESOURCES LIMITED

Golddigger Property 2022



GOLIATH
RESOURCES LIMITED

Current Model

Bonanza Shear
 >13,000,000 m³
 Avg. 5.31 m @ 2.7 g/t AuEq

Surebet Zone
 ~5,500,000 m³
 Avg. 6.88 m @ 6.31 g/t AuEq

Scale: 0 100 200 300
 Plunge -21
 Azimuth 330

~5,500,000 m³

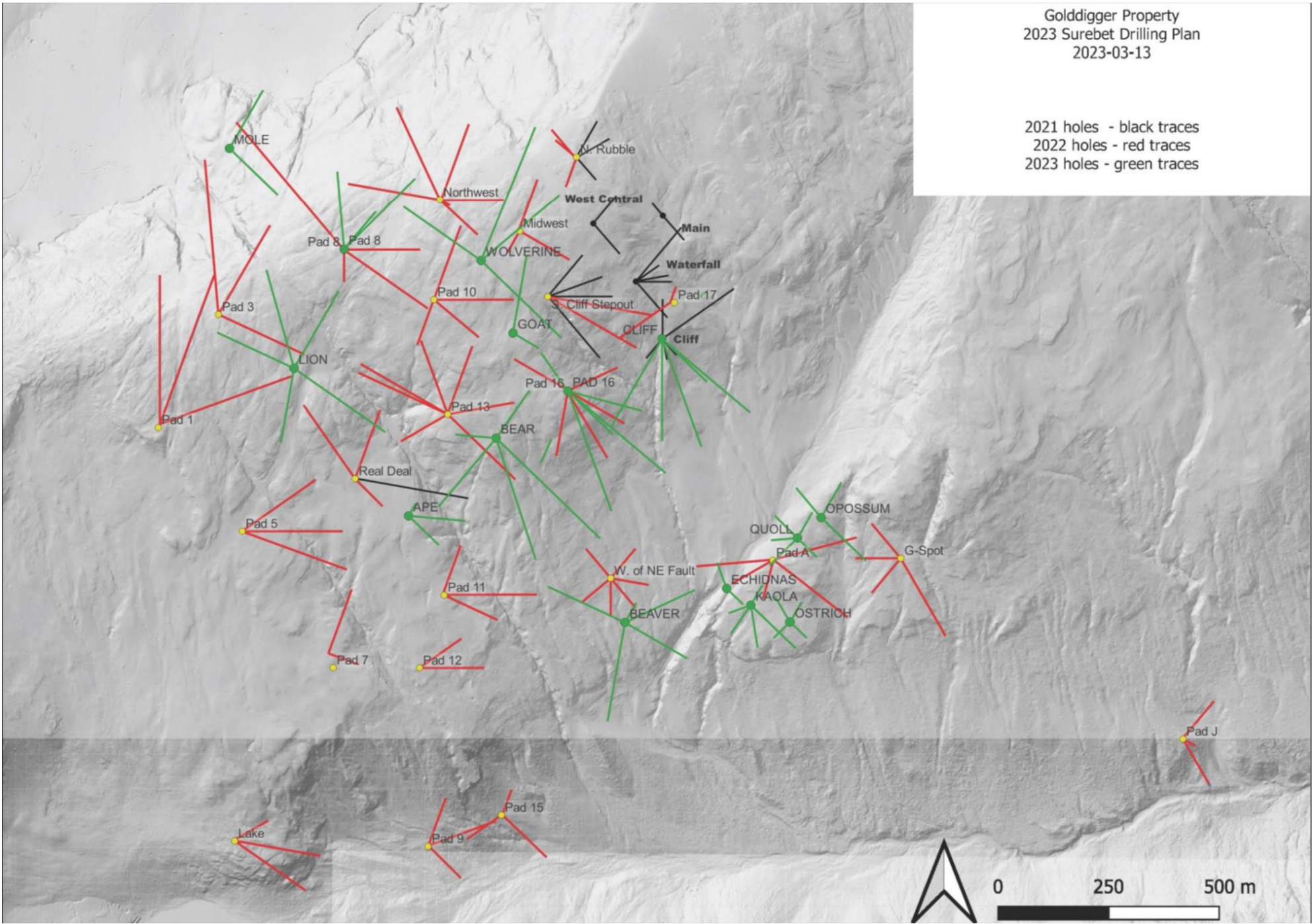
0.88 m @ 6.31 g/t

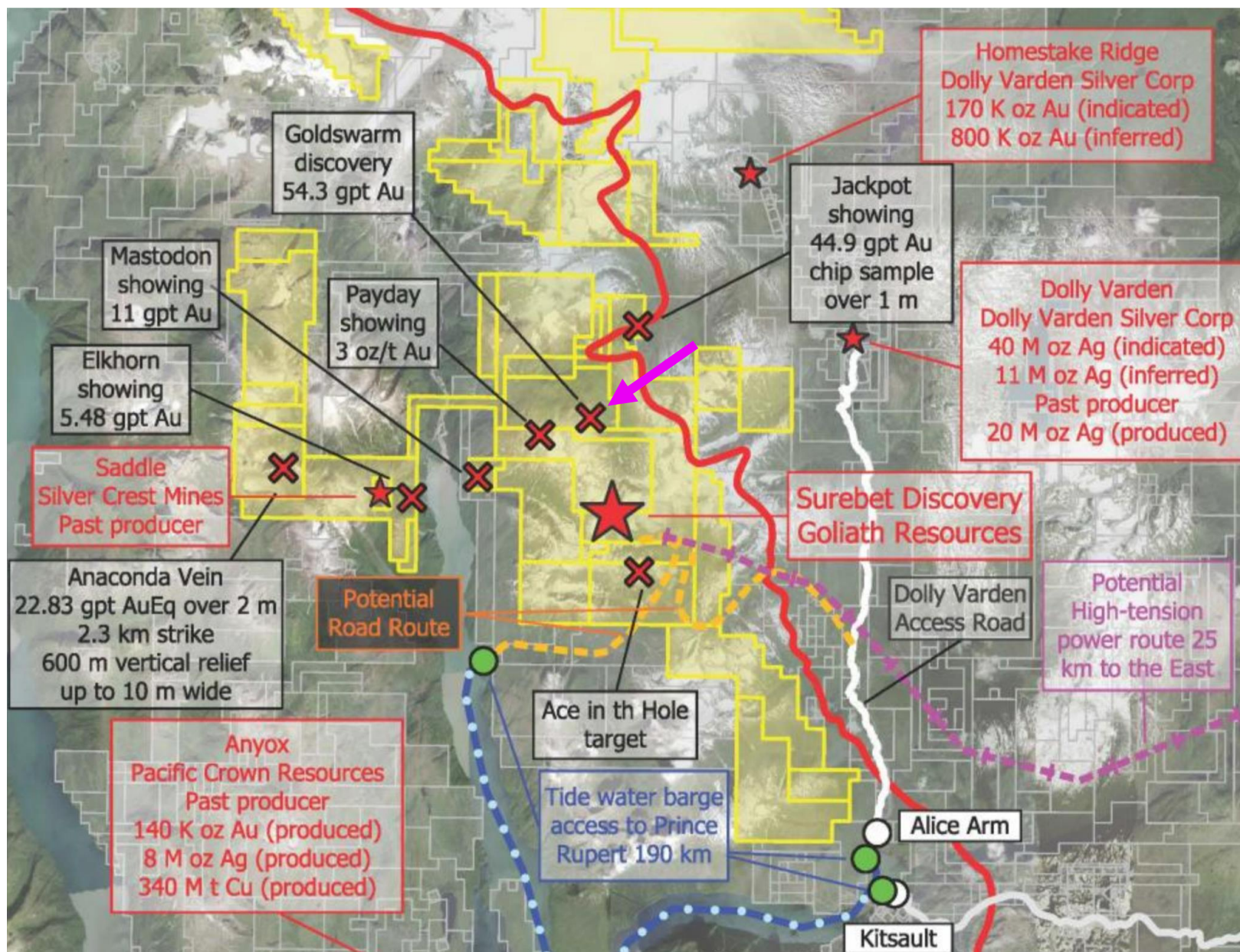
>13,000,000 m³

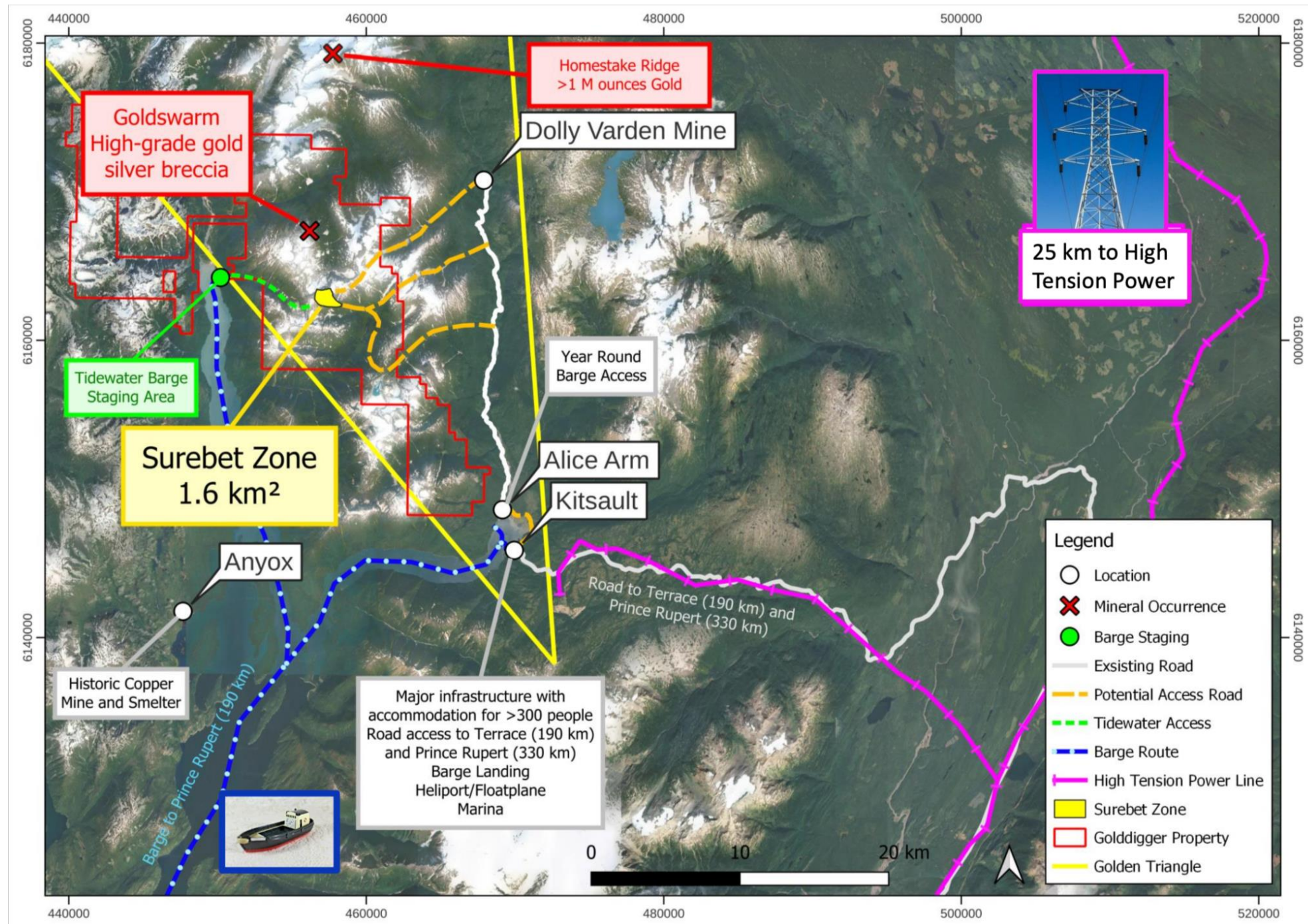
5.31 m @ 2.7 g/t



2021 holes - black traces
2022 holes - red traces
2023 holes - green traces

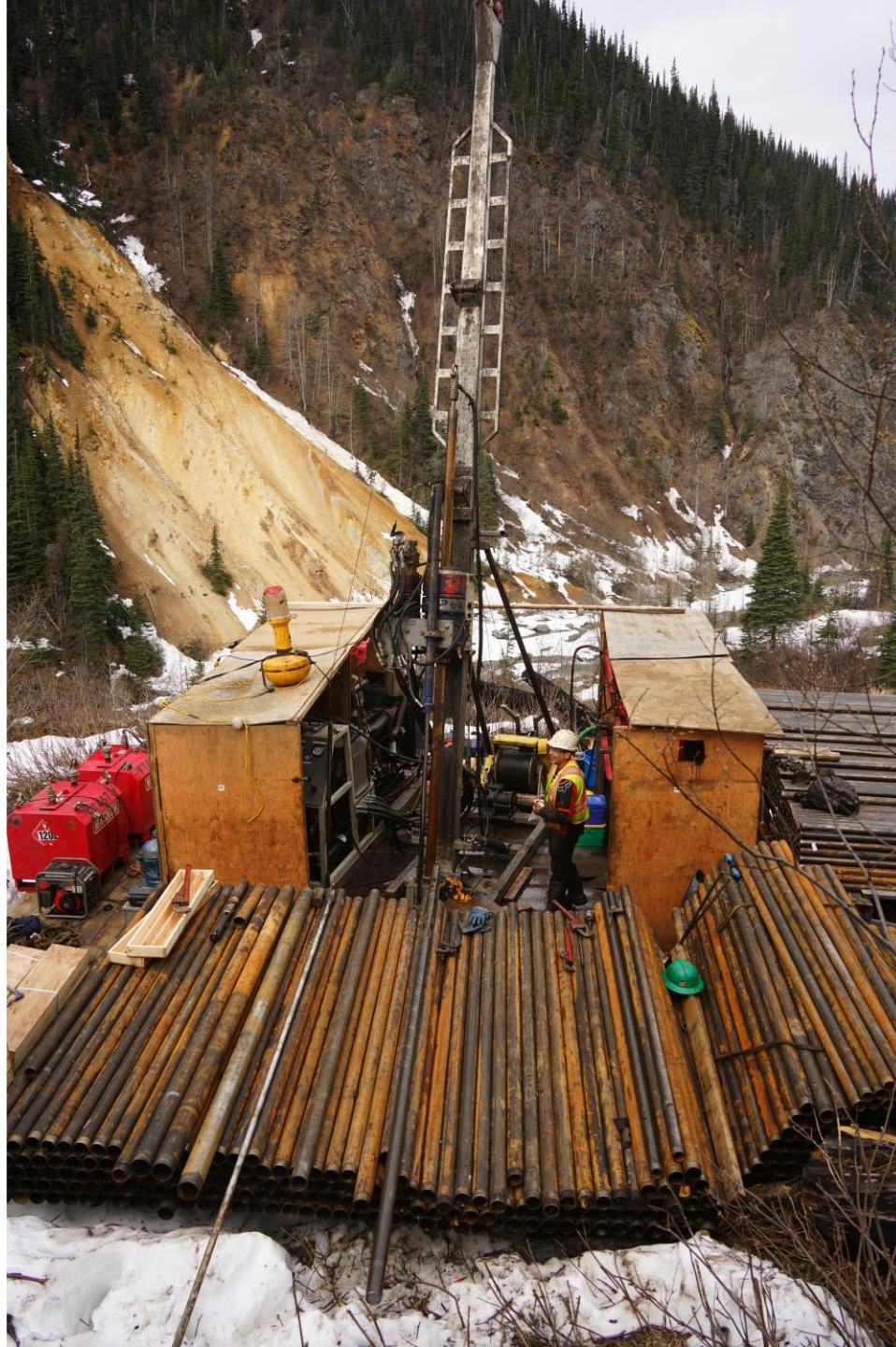








**BRIXTON
METALS**





THORN PROPERTY TARGETS COPPER GEOCHEMISTRY

Since 1952:
315 holes
74,500m drilled
28,750 Soils
9,300 Rocks
1,380 Stream Seds

14 Target Areas

NORTH TARGET

CAMP CREEK

OUTLAW

WEST TARGET

TAT

TERR

TRAPPER

VAL

EAST TARGET

CENTRAL TARGET

METLA

PLUM

GOLDEN BEAR MINE
Past Producer Au

SOUTH TARGET

GOLDBEE

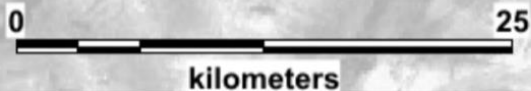
Rock Samples Cu (ppm)



Silt Samples Cu (ppm)



Soil Samples Cu (ppm)



Golden Bear Mine Access Road

2022 CAMP CREEK: A NEW PORPHYRY DISCOVERY



Copper Equivalent (CuEq) is calculated based on US\$ 4.30/lb Cu, US\$ 1820.00/oz Au, US\$ 23.80/oz Ag, \$US 18.00/lb Mo. These prices represent the approximate 1 year moving averages of metal prices and calculations assume 95% recovery.

The formula is: $\text{CuEq \%} = (\text{Cu \%} + (0.617248 * \text{Au g/t}) + (0.008072 * \text{Ag g/t}) + (0.000419 * \text{Mo ppm})) * 0.95$

Please refer to Slide 23 of this presentation for individual metal grade breakdowns for each drill hole.

Looking South-Southeast

CAMP CREEK

THN19-150

554.7m of 0.57 g/t Au, 43.2 g/t Ag, 0.24% Cu or 0.90% CuEq
Incl. 136m of 1.35 g/t Au, 133.62 g/t Ag, 0.31% Cu or 2.10% CuEq



THN21-184

821.25m of 0.48% CuEq
Incl. 318.25m of 0.92% CuEq
Incl. 14.00m of 0.56% CuEq

THN22-221

779.65m of 0.37% CuEq
Incl. 582.44m of 0.45% CuEq
Incl. 234.00m of 0.57% CuEq
Incl. 20.85m of 0.78% CuEq

THN22-201

967.71m of 0.38% CuEq
Incl. 365.00m of 0.67% CuEq
Incl. 150.00m of 0.87% CuEq
Incl. 40.00m of 0.97% CuEq

Drill Results

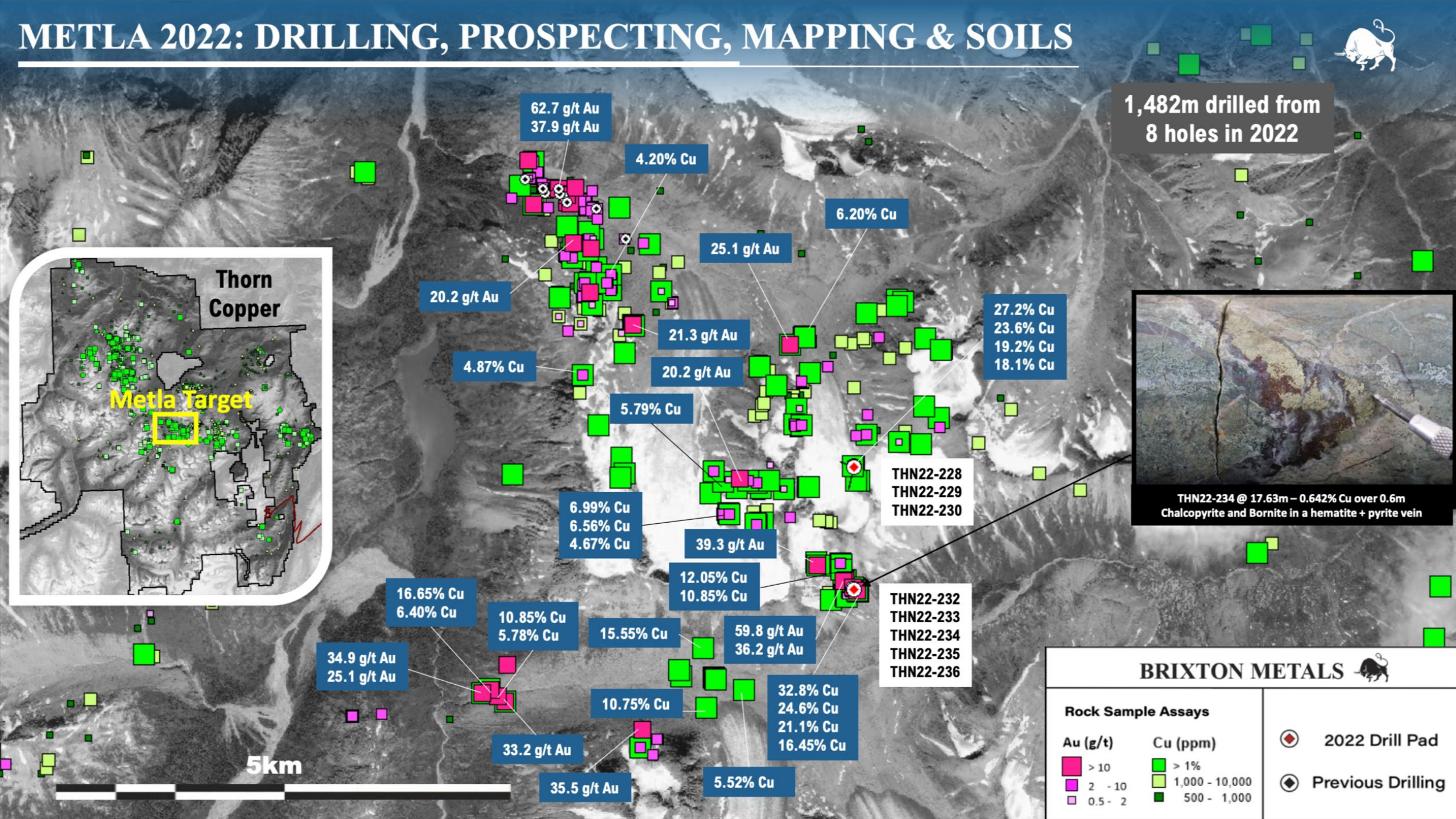
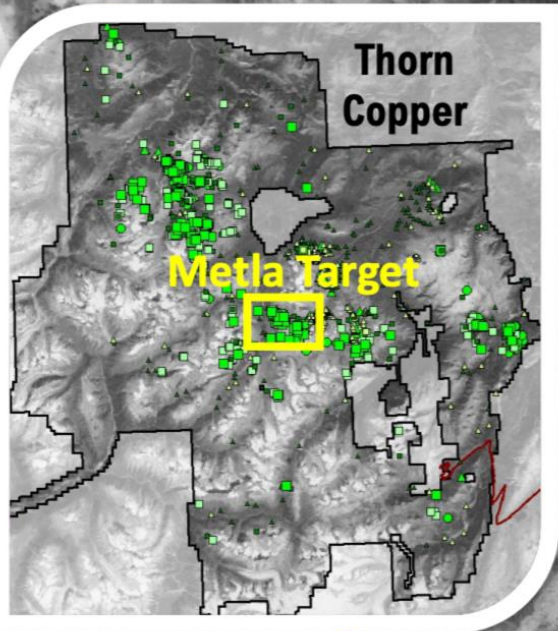
- 0.1 - 0.3 % CuEq
- 0.3 - 0.5 % CuEq
- 0.5 - 0.7 % CuEq
- 0.7 - 0.9 % CuEq
- > 0.9 % CuEq










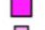

METLA 2022: DRILLING, PROSPECTING, MAPPING & SOILS



1,482m drilled from
8 holes in 2022



THN22-234 @ 17.63m – 0.642% Cu over 0.6m
Chalcopyrite and Bornite in a hematite + pyrite vein

BRIXTON METALS 		
Rock Sample Assays		
Au (g/t)	Cu (ppm)	 2022 Drill Pad  Previous Drilling
 > 10	 > 1%	
 2 - 10	 1,000 - 10,000	
 0.5 - 2	 500 - 1,000	

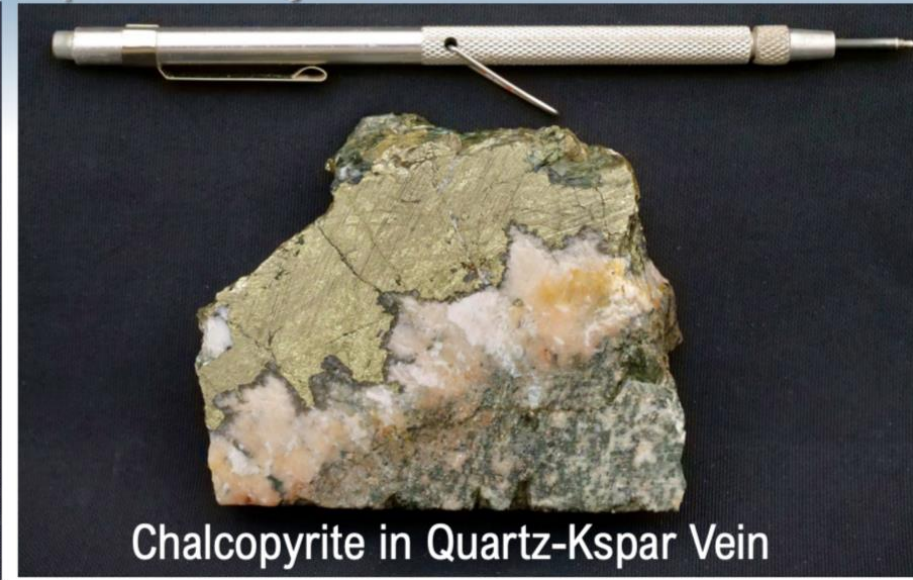
METLA: COPPER-GOLD ALKALIC PORPHYRY TARGET



Bornite-chalcopyrite-visible gold, hosted in potassically altered hornblende diorite

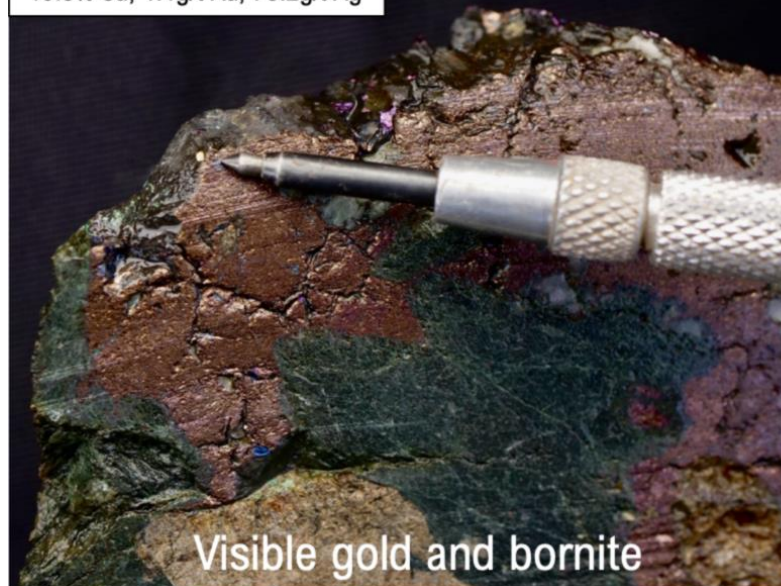


Chalcopyrite in Kspar-Epidote-Chlorite



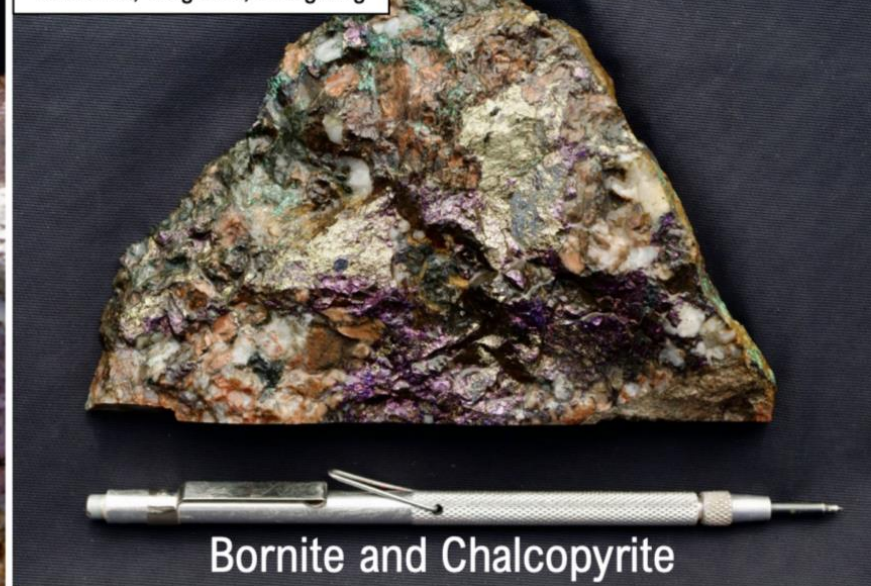
Chalcopyrite in Quartz-Kspar Vein

D200069
19.3% Cu, 1.1g/t Au, 75.2g/t Ag



Visible gold and bornite

D200070
18.1% Cu, 1.2g/t Au, 82.8g/t Ag



Bornite and Chalcopyrite

Visible gold and bornite





THORN PROPERTY TARGETS GOLD GEOCHEMISTRY

14 Target Areas

NORTH TARGET

CAMP CREEK

OUTLAW

TAT

TERR

WEST TARGET

TRAPPER

VAL

EAST TARGET

CENTRAL TARGET

METLA

PLUM

GOLDEN BEAR MINE
Past Producer Au

SOUTH TARGET

GOLDBEE

- 80km Cu-Au megatrend
- Long-lived Triassic-Jurassic-Cretaceous-Eocene aged mineralizing systems
- Largely underexplored

Rock Samples
Au (g/t)

- > 10
- 2 - 10
- 0.5 - 2

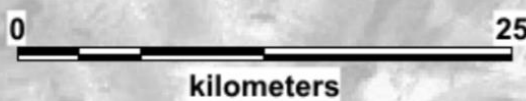
Soil Samples
Cu (ppm)

- > 500
- 100 - 500
- 30 - 100

Silt Samples
Cu (ppm)

- > 100
- 50 - 100
- 10 - 50

Golden Bear Mine Access Road

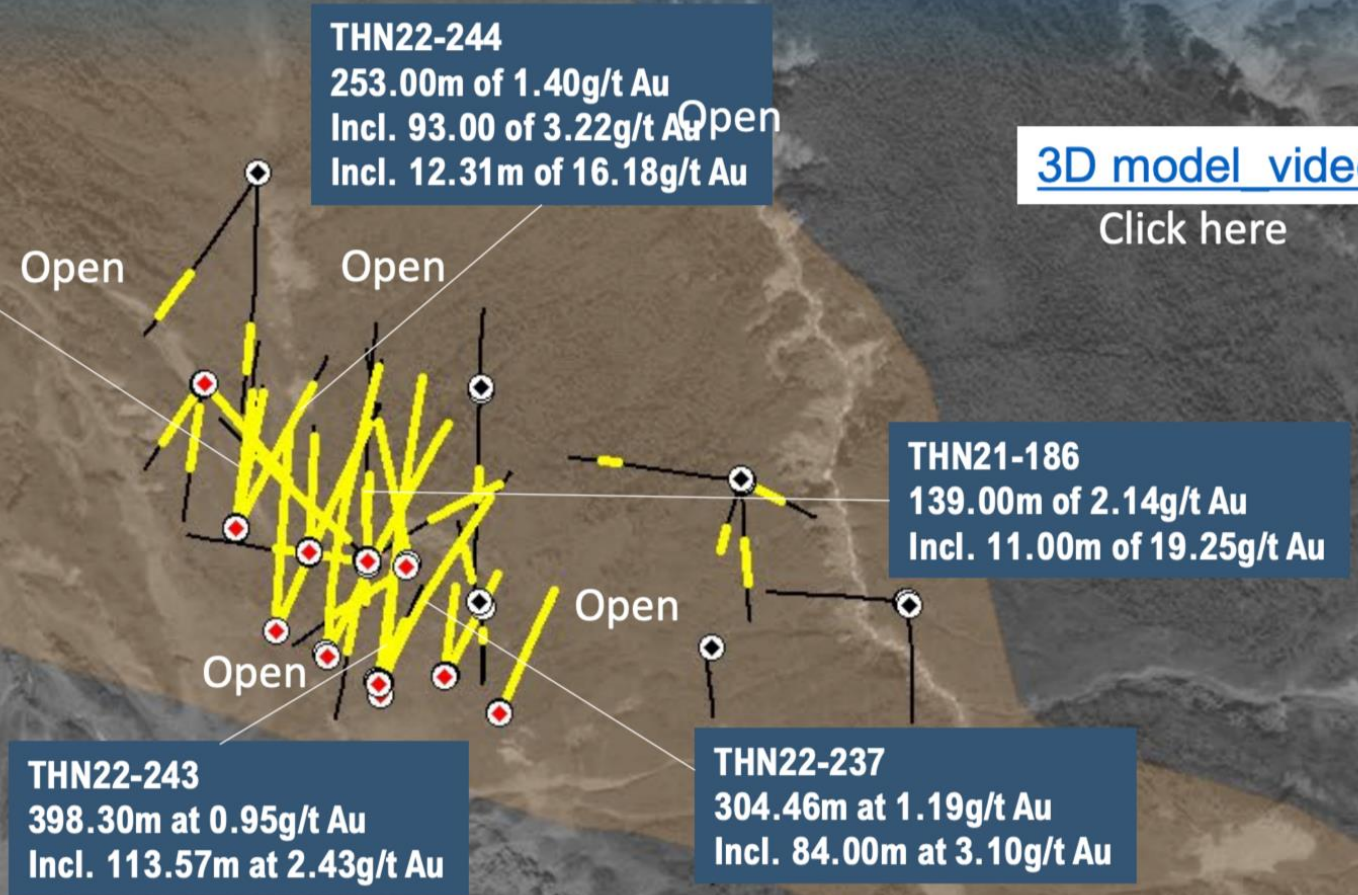
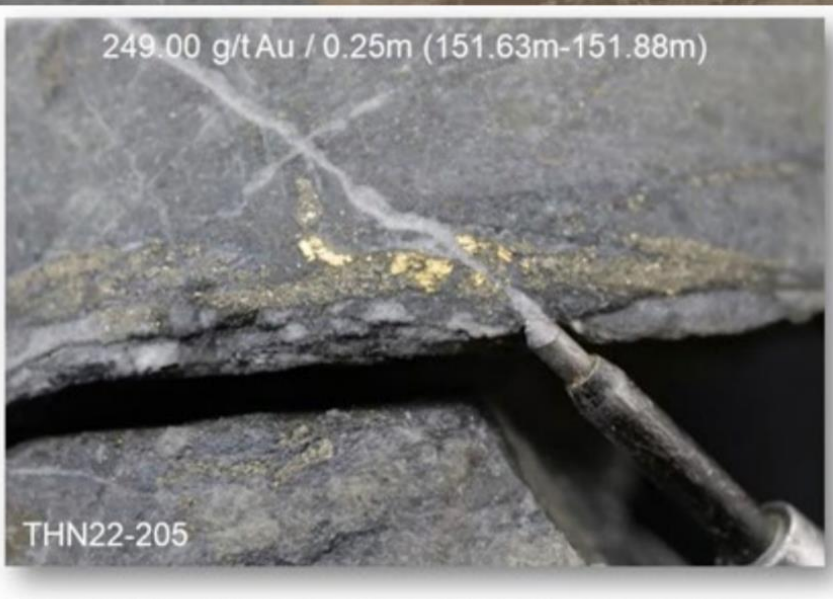


TRAPPER GOLD TARGET– 2022 DRILLING



Gold & Zinc Geochemical Trend

THN22-205
64.00m of 5.74g/t Au
Incl. 28.95m of 10.36g/t Au



[3D model video](#)

Click here

◆ 2022 Drill Pad

◆ Previous Drilling

Gold Intercept

Drill Trace







CRESCAT CAPITAL[®]

The Value of Global Macro Investing

Marek Iwahashi

Client Service Specialist

(303) 271-9997 | miwahashi@crescat.net